



K'en T'em
Limited
Partnership

2023

ANNUAL REPORT

☎ 250-378-1864

✉ info@kentem.ca

🌐 www.kentem.ca



K'EN T'EM

**TO HELP
SOMEONE**

STENZCO

01.

Introduction

02.

K'en T'em Overview

03.

Environmental

04.

Cultural Heritage

05.

K'en T'em Printing and Design

06.

K'en T'em Partners





OUR HISTORY

The Citxw Nlaka'pamux Assembly was formed in 2013 for the purpose of administering the Participation Agreement between Highland Valley Copper and the Participating Bands, and the Economic Community Development Agreement (ECDA) with the province. The purpose of creating K'en T'em Limited Partnership was to exploit economic opportunities offered to the Citxw Nlaka'pamux Assembly under the Highland Valley Copper Participation Agreement, and other opportunities.

K'en T'em Limited Partnership (K'en T'em) is the business and economic development entity formed to represent the eight (8) Citxw Nlaka'pamux Assembly (CNA) Participating Bands; specific to our obligations within the Impacts and Benefits Agreement negotiated between the Province of BC, Teck HVC, and the Participating Bands. Through partnerships and investments, K'en T'em has strategically aligned itself with key personnel, business, and industry experts as a means to foster growth. Through procurement opportunities and capacity development with partners that offer solid industry expertise and reputations, which also have impeccable safety programs and history.

THE EIGHT PARTICIPATING BANDS



 **Citxw Nlaka'pamux Assembly**
Sole Shareholder of K'en T'em Management Corporation

 **K'en T'em Management Corp.**
Board of Directors appointed by CNA

 **K'en T'em Limited Partnership.**
Limited Partners: Participating Bands (or their nominees)

OUR VISION

Our vision is to be a recognized driver of community socio-economic wellbeing rooted in Nlaka'pamux Values and have clear accountability to and collaboration with the communities.

We aim to work together to be a relevant resource for Nlaka'pamux people in becoming self-sustaining and vital economic communities.



SUMMARY OF SERVICES AND PARTNERSHIPS

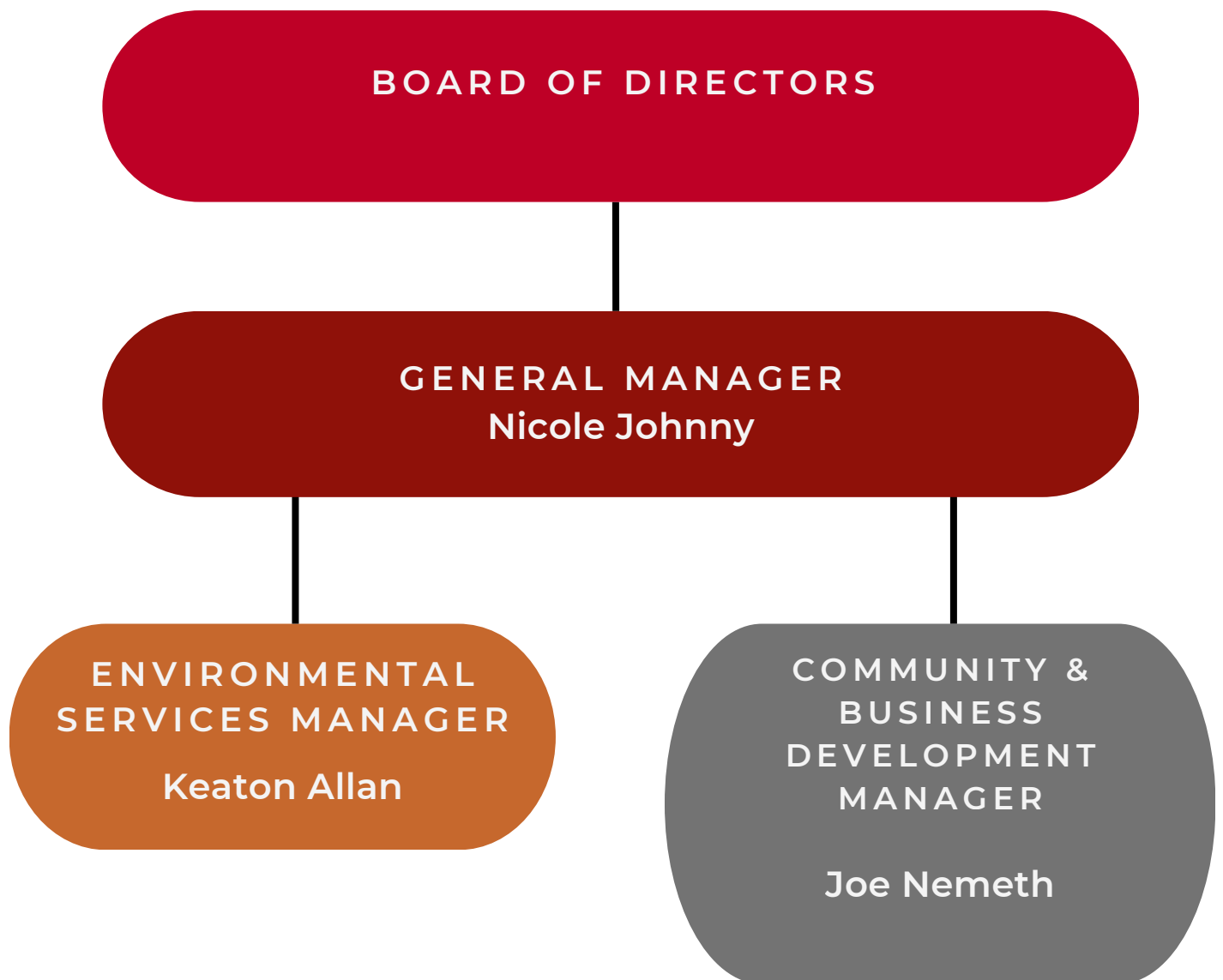
SERVICES

- **Environmental**
 - Water Monitoring
 - Fish and Aquatics
 - Wildlife Monitoring
 - Terrestrial Services
 - Environmental Planning
 - Environmental Reporting
- **Cultural Heritage**
 - Preliminary Field Reconnaissance
 - Archaeological Impact Assessments
 - Excavation and Site Assessments
- **Printing & Design**
 - Wide-format, laser and solvent printing
 - Business or personal needs
 - Signs, banners, stickers and decals

BUSINESS PARTNERSHIPS AS OF 2023

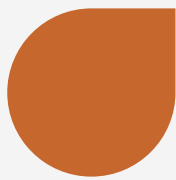
- Rock Solid Industries
- BAT Construction Ltd.
- Cantex Mining Services Ltd.
- Cool Creek Energy
- Drillwell Enterprises
- Fort Modular Inc.
- Harrison Industrial Contracting
- Integral Ecology Group
- Interior Iron
- Lakewood Electric
- Newport Structures Ltd.
- RKM Services Ltd.

ORGANIZATIONAL STRUCTURE



K'EN T'EM SERVICES

K'en T'em currently has three main services to offer, which is where its own-source revenue comes through. The three main services are Environmental, Cultural Heritage, and Printing and Design.



ENVIRONMENTAL



CULTURAL
HERITAGE



PRINT & DESIGN



ENVIRONMENTAL SERVICES

Demonstrating excellence in the conservation and stewardship of the Nlaka'pamux Territory.

K'en T'em is committed to maintaining the Nlaka'pamux standard of land-resource management in all levels of its work. The staff have a wide range of environmental service experience, including fisheries, wildlife, water quality, and forestry among others. With the combined expertise and Nlaka'pamux values, K'en T'em can confidently provide environmental expertise and services to the Mining, Forestry, Transportation, Oil/Gas and Utility sectors.



PROJECTS IN THIS SECTION:

- Environmental Monitoring with Highland Valley Copper
- Environmental Baseline Program with Westhaven Gold Corp.
- Groundwater and Soil Monitoring Programs with Nicola Mining Inc.

ENVIRONMENTAL MONITORING

ABOUT THE SERVICES

K'en T'em Environmental Services has been providing services to Teck Highland Valley Copper (HVC) since 2016 to support the mine in meeting both surface and groundwater monitoring needs, as well as other environmental monitoring services. This opportunity came out of a joint desire of HVC and CNA to create an economic driver for Nlaka'pamux people while working with HVC to meet their monitoring needs.

2023 EMPLOYMENT

14 Full time staff

Highland Valley Copper

Teck

SCOPE OF WORK

K'en T'em works with HVC on a multitude of programs in the environmental sector. These programs are in line with HVC environmental management plans and/or satisfy regulatory requirements. The HVC programs that K'en T'em participates in are either aquatic or terrestrial focused.



We employ qualified environmental and land trained professionals who have developed management strategies that meet the needs of the local communities.



ABOVE: HIGHLAND VALLEY COPPER

AQUATIC PROGRAMS

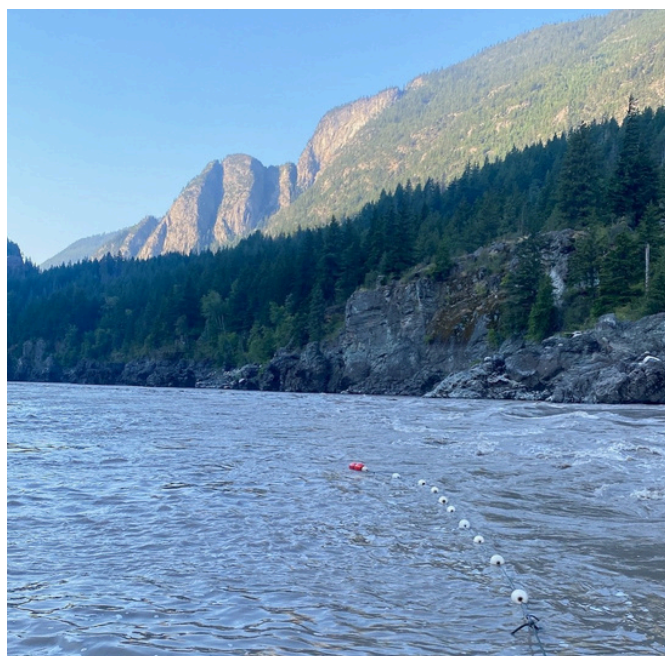
SURFACE AND GROUNDWATER SAMPLING:

K'en T'em is currently sampling 87 surface water sites and 155 groundwater sites. Sampling is done in order to meet permit requirements, establish baseline data, or to satisfy other certain needs put forward by HVC.

The water sampling takes place on a cyclical basis either happening weekly, monthly, quarterly, or annually depending on sampling parameters.

EMPLOYMENT

This contract is the largest of K'en T'em's environmental contracts and has grown rapidly over the past few years, moving from only two employees to now seven full-time staff.



2023 ANNUAL AQUATIC BIOMONITORING PROGRAM

K'en T'em joined Triton Environmental to collect data for HVC's Annual Aquatic Biomonitoring report. This involved staff capturing rainbow trout from five lakes and three streams for biological sampling. Additionally, data collected from K'en T'em's water monitoring program was also included in this report.

2023 MDMER SURFACE WATER SAMPLING

The MDMER surface water sampling program (Metal and Diamond Mining Effluent Regulations/Environmental Effects Monitoring) began in February of 2023 as a regulatory compliance requirement. Discharge from the mine site to the receiving environment is subject to compliance with the MDMER, regulations made pursuant to the Federal Fisheries Act under the Environment and Climate Change Canada (ECCC). K'en T'em has a team of 2 that sample 5 areas of the mine all year round. Highmont, Pukaist, Bose Lake Saddle Dam, Trojan Creek and Bethlehem. The Program consists of the regular weekly water sampling, monthly Acute Toxicity water sampling and bi-yearly Chronic Toxicity.

DUSTFALL SAMPLING

ABOUT THE PROGRAM

This program is designed to both support the dust reduction efforts of HVC and the collection of offsite data for future environmental assessments and permits, by quantitatively measuring current conditions and the success of dust management measures implemented. Currently there are 23 locations around HVC and 1 reference location at Rey Creek.

2023 WOOD'S CREEK FISH DIVERSION

ABOUT THE PROGRAM:

HVC identified a need to ensure that fish from Wood's Creek were not entering into the diversion inlet. This would help prevent any potential fish mortality associated with becoming trapped within the inlet pond.

SCOPE OF WORK

In October of 2023, K'en T'em conducted a fish salvage of HVC's Wood's Creek Diversion Inlet Pond. The salvage process removed all present fish from the inlet pond, as well as a small section of the creek below an installed exclusion net. Electrofishing and minnow traps were utilized to safely remove the fish. They were then released back into the creek, upstream from the exclusion net. K'en T'em was responsible for obtaining the required permits, conducting the salvage, installing the exclusion net, and drafting a technical memo summarizing the work and findings.



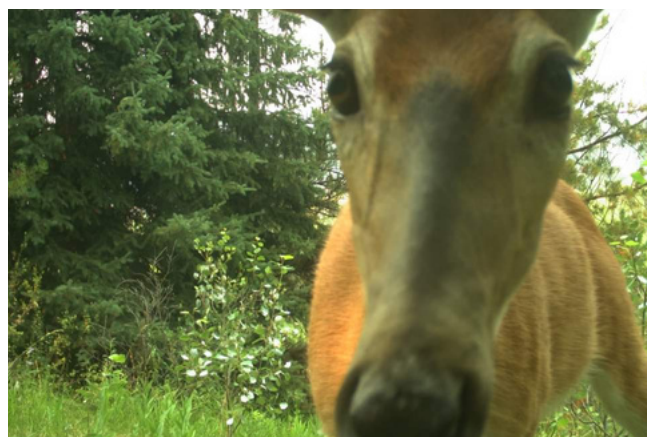
2023 WILDLIFE CAMERA PROGRAM

ABOUT THE PROGRAM

In January 2023, K'en T'em took on the analysis for the wildlife camera data collected to support ongoing wildlife management at the HVC mine site. Trail cams are strategically deployed and maintained throughout the mine site by K'en T'em staff.

SCOPE OF WORK

The purpose of this program is to determine the presence of wildlife species throughout the mine site. This program is ongoing and influenced by HVC Wildlife Management Plan.



PILEATED WOODPECKER SURVEYS

In February 2023, K'en T'em conducted Pileated Woodpecker nest surveys around the HVC tailings pond. Pileated woodpecker nest provide high quality habitat for many different forest dwelling species, therefore trees hosting woodpecker nests are protected under provincial legislation.

SCOPE OF WORK

K'en T'em was tasked with surveying the forest around the tailings pond to identify any trees hosting woodpecker nests. Moving forward these trees will be protected during any expansion work at the mine.



RECLAMATION

ABOUT THE RECLAMATION PROGRAM

In 2023 K'en T'em collaborated with Integral Ecology Group (IEG) to conduct the annual reclamation assessments done at the HVC mine site. This reclamation program was developed in collaboration with Nlaka'pamux community members and organizations as part of the development of HVC's Returning Land Use Plan.



SCOPE OF WORK

The program aims to assess the effectiveness of HVC's reclamation efforts and how that aligns with the vision of the land being utilized by Nlaka'pamux people post-closure of the mine.

The HVC reclamation program focuses on two main objectives; reclamation of rangeland and reestablishment of native ecosystems.

To assess these objectives, IEG established Permanent Sample Plots (PSP's) to quantify annual reclamation progress on the mine site.

2023 BIODIVERSITY RESEARCH PROGRAM

ABOUT THE PROGRAM

In 2023 K'ën T'em was requested by Teck - Highland Valley Copper to assist with their 2023 Biodiversity Research Program.

PURPOSE

The purpose of this research was to assess additional biodiversity monitoring techniques to better compare reclamation progression of naturally disturbed (i.e., forest fire) and undisturbed reference sites.

SCOPE OF WORK

This project utilized soil sampling, game camera footage, bio-acoustic sampling, and insect malaise traps to gather a broad spectrum of environmental data.

Each type of sampling method was deployed at 27 unique sites across the footprint of the mine. Each site was sampled twice between the months of July to September.

The results of the sampling were sent to the University of Guelph for analysis and interpretation. These results would determine further biodiversity sampling endeavors.

DISCOVERY OF A NEW SPECIES

Through the University of Guelph's analysis of the biodiversity program data, it was determined that a new species of moth had been detected. HVC and the University of Guelph are working with the CNA Language department to determine a name for the species in nłeʔkepmxcín.



ABOVE: SHOVELNOSE MOUNTAIN

ENVIRONMENTAL BASELINE PROGRAM



ABOUT THE PROGRAM

In 2022 K'en T'em was requested by Westhaven Gold Corp to assist with the environmental baseline program on their Shovelnose exploration project.

PURPOSE

The purpose of this program is to establish a dataset of pre-disturbance hydrological, terrestrial and fish/fish habitat pre-existing conditions. This dataset serves as a reference or baseline for comparison when assessing the impacts of future changes on these environmental components.

SCOPE OF WORK

The scope of work required for establishing this dataset has required electrofishing, breeding bird surveys, water monitoring, and habitat assessments for a number of different aquatic and terrestrial species.

In addition to the environmental data collection being done, there was also a Preliminary Field Reconnaissance (PFR) completed to assess the cultural heritage resources of the project footprint.

2023 PROGRAM DESIGN & REPORTING

In 2023 K'en T'em has increased our involvement in the project by participating in program design and reporting.



ABOVE: SHOVELNOSE MOUNTAIN

GROUNDWATER & SOIL MONITORING PROGRAMS



ABOUT THE PROGRAMS

In the Fall of 2022 K'en T'em took on the groundwater and soil monitoring programs to support environmental compliance at the Craigmont property owned by Nicola Mining Inc.

K'en T'em also collaborated with CoreGeoscience to write the 2022 Environmental Water Quality Report reporting on surface and groundwater results from the previous year.

K'en T'em took on the groundwater and soil sampling requirements in Q3 of 2022 on a quarterly basis.

2023 SCOPE OF WORK

In 2023 Nicola Mining is planning to operate the Craigmont mill, which will increase the water monitoring frequency to monthly.



ABOVE: CRAIGMONT MINE

CULTURAL HERITAGE SERVICES

K'en T'em works alongside archaeology experts to provide monitoring in forestry activities, and at mining or industrial sites to ensure cultural material and/or artifacts are properly identified, mapped and protected.



PROJECTS IN THIS SECTION:

- Cultural Heritage Monitoring Partnership & Employment
- Terra Archeology Contract

CULTURAL HERITAGE MONITORING PARTNERSHIP

K'en T'em has maintained a Cultural Heritage monitoring partnership with Teck Highland Valley Copper Mine since 2017.

K'en T'em sub-contracts and coordinates a full-time staff of qualified field technicians and land trained professionals who have developed management strategies that meet the needs of the local communities.

EMPLOYMENT

K'en T'em has hired more seasonal cultural heritage technicians and monitors than in previous years to meet the growing demand from HVC as they increase the number of crews needed for their annual Cultural Heritage Program.

Of our seventeen technicians in 2023, eleven (11) are members of our Participating Bands, twelve (12) are Nlaka'pamux and (15) fifteen are indigenous.



ABOVE: CULTURALLY MODIFIED TREE



ABOVE: BIFACE SURFACE LITHIC

TERRA ARCHAEOLOGY CONTRACT



ABOUT TERRA ARCHAEOLOGY

Terra Archaeology provides professional archaeological consulting services throughout British Columbia. Project scope ranges from single lot developments to large, multi-year projects such as major highway and transmission corridors, mine development, pipelines, and other broad land base projects.

K'EN T'EM 2023 CONTRACT

K'en T'em has signed a contract with Terra Archaeology for the upcoming 2023 Cultural Heritage field season at HVC. .

The Terra Archeology contract was executed with a dedication towards collaboration with complementary industry partners, while ensuring an improved process for 2023 to allow for increased reporting and decision making in CNA's and K'en T'ems participating bands' best interests.

The contract will expedite the time it takes for the CNA and K'en T'em to receive detailed reports on program activities and discovery of archaeological and heritage resources.

CONTRACT INCLUDES

- **Qualified Terra Archaeology Field Director**
- **Qualified Terra Archaeology Field Supervisor**

HISTORY

Previous reports on program activities and discovery of archaeological and heritage resources were only reported on in detail in archaeological impact assessment (AIA) interim reports and technical memos.

Cultural Heritage work began in early July 2022, with archaeological impact assessment work commenced in July and ended in early November once the permafrost set in. Cultural Heritage crews continue to have one of the best health and safety records on-site at Teck HVC.



K'EN T'EM PRINTING & DESIGN

In 2022, K'en T'em launched its printing and design business to be more self-sufficient and diverse in its business operations. K'en T'em is committed to providing marketing and printing resources that will help you efficiently manage and operate your business.



PRINTING & DESIGN



ABOUT K'EN T'EM PRINT AND DESIGN

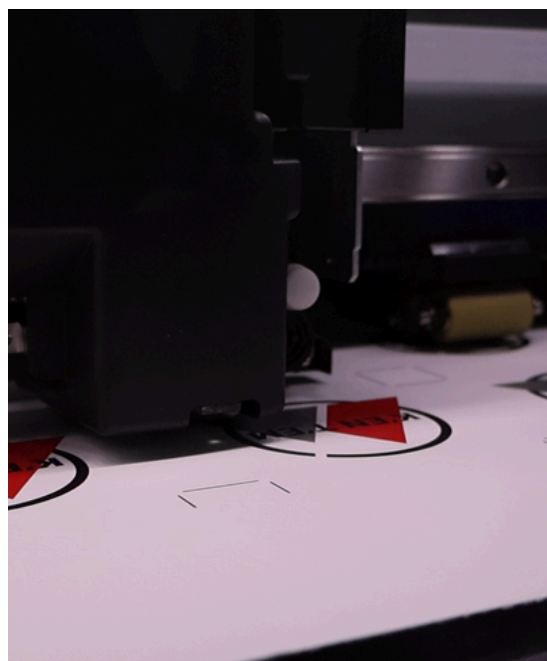
K'en T'em prints for many local community events and businesses and has a growing reputation as more and more customers are satisfied with excellent service. As well as owning and operating their industrial printer, K'en T'em has also recently purchased a map plotter. This will allow K'en T'em to print maps and blueprints and be the first to offer plotting services in the lower Nicola Region.

SERVICES OFFERED

- Invoices • Note Pads • Proposals • Calendars
- Tickets • Book Binding • Product Packaging
- Labels • Stickers • Signs • Banners • Lamination • Magnets • Logo Design • Website Design • Social Media Design • Photo Editing • Video Editing • Package Design
- Business Cards • Letterhead • Envelope • Folding Brochures • Flyers • Rack Cards • Post Cards • Printing • Copying • Scanning • Posters • Invitations • Tent Cards • Menus • Newsletters • Annual Reports • Training Manuals • Magazine Design • Newspaper Design
- Stickers • Apparel • Product Labels • Vehicle Decals • Heat Press Designs • Banners • Signage • Vehicle Wraps • Custom Hats • Wall Decor •

100%

FIRST NATIONS
OWNED & OPERATED



BUSINESS & CONTRACTING

K'en T'em diversifies its revenue streams by engaging in strategic partnerships and revenue sharing. These collaborations entail joint ventures with established companies, renowned for their expertise in relevant industries, to pursue opportunities on a larger scale than otherwise possible. Under the guidance of the General Partnership, K'en T'em serves as a central hub for a range of joint venture initiatives.

These partnerships yield numerous advantages for K'en T'em, including employment and training opportunities for community members, as well as subcontracting prospects for local indigenous businesses. By leveraging these alliances, K'en T'em not only strengthens its financial standing but also fosters economic growth and empowerment within the community.



K'EN T'EM PARTNERS

K'en T'em is grateful for the opportunity to partner with community-minded businesses through joint ventures and revenue sharing agreements. We thank the following companies for their partnerships:



ROCK SOLID INDUSTRIES (RSI)



- INFO@RSICONTRACTING.COM
- 250-280-8999
- 2581 B LAUDER AVE MERRITT BC V1K 1B8

ABOUT ROCK SOLID INDUSTRIES (RSI)

Rock Solid Industries is a progressive company with a range of diverse experience that we incorporate into all our projects. Our management group believes in a hands-on approach and are experienced in every facet of the Earthworks Industry. This experience allows us to provide innovative solutions for our clients and ensure their projects are completed safely in the most cost-effective manner possible.

We pride ourselves on being able to react quickly to client needs with an approach that is safe, calm and methodical. This approach has gained us recognition as being a reliable and solid partner for clients ranging from small day-to-day projects to large-scale projects and emergency-management situations.



K'EN T'EM PARTNERSHIP

RSI is operated and managed by an experienced management team, while K'en T'em offers oversight and support. RSI strives to build capacity with personnel through education, mentorship, and employment where possible, and having an opportunity to participate in local projects nurtures pride and commitment.

Working collectively to support RSI directly benefits the Participating Bands and their beneficiaries through continual investment, employment, economic development, and revenue-sharing opportunities. The opportunity to grow this business while supporting the Eight Participating Bands of CNA and their interests remain a priority for RSI and K'en T'em.

51%
Stake Ownership

K'en T'em is a majority shareholder of Rock Solid Industries.

RSI is a majority-owned Indigenous Business.

EQUIPMENT

- Excavators ranging from 5 to 40 tonnes
- Dozers from D6 to D8 class, Graders, Loaders, Rock Trucks, Packers and Water Trucks,
- A fleet of pick-ups that are configured to support operations.
- GPS Machine Control is available on Dozers and Excavators.



ABOVE: RSI OPERATIONS

SAFETY & ENVIRONMENT

Rock Solid Industries has a comprehensive safety program that meets or exceeds both WorkSafe BC and Industry Standards. Rock Solid achieved COR (SECOR) certification through the BC Construction Association following completion of a full safety audit in August 2017. The company is also SAFE certified through the BC Forest Safety Council. Rock Solid is registered through Avetta and is in compliance with ISNetworld.

SURVEY & DESIGN

Over the past ten years, the leadership team at Rock Solid Industries has leveraged the technological and application-based advancements of GPS survey systems, GPS-based machine controls systems and software solutions aimed at drastically increasing the overall efficiency and productivity of our crews and equipment. We also use drones to quantify volumes on our project sites, gravel pits and rock quarries.



BAT CONSTRUCTION LTD.

- INFO@BATCONSTRUCTION.COM
- 250-573-1222
- 10230 DALLAS DRIVE
- KAMLOOPS, BC V2C 6T4



ABOUT BAT CONSTRUCTION LTD.

Established in 1988, BAT Construction Ltd. has years of service experience and have executed an extensive list of varied projects, all across North America. BAT Construction Ltd. offers a full range of Geo-Technical Stabilization Expertise. The company has gained a reputation for developing specialized equipment and innovative construction techniques that are required to perform the work in this unique construction field.

This team is a highly trained group of a certified personnel who offer knowledge, experience and responsiveness to the most challenging of projects and is part of a group of companies that work in partnership to fully facilitate all aspects of the project with the highest industry standards for safety and quality management.

K'EN T'EM PARTNERSHIP

K'en T'em and BAT Construction Ltd. have a revenue sharing agreement.



SERVICES

- Horizontal Drain Hole Drilling
- Rope Access
- Geotechnical Stabilization Systems
- Remote Access Construction
- Slope Mesh Systems
- Shotcrete and Shoring
- Blasting and Boulder Breaking
- Mine Services



CANTEX MINING SERVICES LTD.



- INFO@CANTEX.CA
- 250-860-8582
- 203 – 1634 HARVEY AVE KELOWNA, BC V1Y 6G2

ABOUT CANTEX MINING SERVICES INC.

Cantex Mining Services Ltd. is a leader in civil and mining construction in British Columbia, known for delivering top-tier projects with a strong commitment to safety, efficiency, and quality. The company's success is driven by a skilled team of management and supervisors, supported by a highly trained and experienced workforce. Cantex is dedicated to meeting clients' need, ensuring projects are completed safely, on time, and within budget, upholding the highest standards. At Cantex, safety is the ultimate priority, reflected in their modern equipment and unwavering commitment to excellence.

K'EN T'EM PARTNERSHIP

K'en T'em has an alliance agreement with Cantex Mining Services (CMS) that focuses on revenue sharing, subcontracting and employment opportunities. Cantex regularly communicates with K'en T'em for open job postings and these can be found on K'en T'em and CNA websites.

The work of the contract takes place at Teck HVC Tailings storage facility. This is currently being extended till end of 2024, it began as a 3-year contract that commenced 2020 and the prime contractor being Cantex Mining Services. CMS agrees to offer revenue opportunities.



ABOVE: HVC TAILINGS STORAGE FACILITY

EMPLOYMENT

With respect to employment, CMS strived to provide at least 10+ members employment in year 1, project employment for Members was to increase to 15 employment opportunities in year two with year three having a target of at least 20 Members employed on the TSF project; unfortunately due to the pipeline and shortage of employees industry wide this target was not met, but they are optimistic they can reach these goals.

Current subcontracting opportunities are those specific to RSI and equipment rental, RSI with Survey and Cool Creek for lubricant delivery.

COOL CREEK ENERGY



- COOL CREEK ENERGY LTD
- 250-374-0614
- 455 DENE DRIVE KAMLOOPS, BC V2H 1J1

ABOUT COOL CREEK ENERGY

Cool Creek Energy and its affiliated company Rocky Mountain Energy Ltd, covers the major part of Southern B.C and the western edge of Alberta with its corporate head office located in Kamloops B.C. Cool Creek Energy is supported by branches in Armstrong and Oliver and Rocky Mountain Energy has branches in Castlegar, Cranbrook, and Prince George.

Cool Creek Energy and Rocky Mountain Energy are wholesale branded distributors of Esso Fuels and Mobil 1 lubricants.

Cool Creek Energy and Rocky Mountain Energy have products ranging from bulk fuel to Mobil lubricants that supply a wide range of industries including agriculture, rail, forestry, residential, mining and construction

Cool Creek Energy currently owns and operates 18 Cardlock locations that are branded “ Esso Key to the Highway” locations. .



ABOVE: COOL CREEK FILLING FUEL TANKS USED TO SUPPORT LYTTON FIRE

K'EN T'EM PARTNERSHIP

K'en T'em and Cool Creek have a joint venture for operations at HVC and also maintain a revenue sharing agreement. Cool Creek supplies multiple B-train tankers daily to supply the HVC day to day operations. As well as fuel, Cool Creek also provides K'en T'em partner Cantex with lubricants needed for operations at HVC.

SERVICES

- Bulk Fuel Delivery
- Packaged Lube Delivery
- Cardlock/Convenience Store
- Tanks and Equipment
- Residential Heating
- Petroleum Services

DRILLWELL ENTERPRISES



- DRILL@DRILLWELL.COM
- 250-280-8999
- 4994 POLKEY ROAD DUNCAN, BC V9L 6W3

ABOUT DRILLWELL ENTERPRISES

Established in 1965 Drillwell Enterprises has been a mainstay in the drilling industry for over 50 years. They pride themselves on well maintained equipment and staffed by the best crews in the business. Drillwell has grown to be one of Western Canada's largest and most experienced water well drilling contractors.

A fleet of 17 drill rigs of varying size and capabilities coupled with experienced operators including 10 certified journeyman water well drillers ensure Drillwell is prepared to meet practically any drilling challenge. Drillwell is committed to providing exceptional results and customer service is no exception.

Drillwell is committed to a safe, successful completion of their drilling programs and prides themselves on providing exceptional results. Out of the many areas they operate, they have operations in the Nlaka' pamux Nation at Highland Valley Copper. They are tasked with drilling wells for the mine that vary in size and have proven to be reliable and efficient on site.



K'EN T'EM PARTNERSHIP

Since 2018 a joint venture between K'en T'em and Drillwell Enterprises has been a strong partnership in the territory. K'en T'em's partnership with Drillwell focuses on revenue sharing and employment and training opportunities for CNA members.



ABOVE: DRILLWELL OPERATIONS VANCOUVER ISLAND

SERVICES

- Waterwells
- Geotechnical/Environmental
- Exploration/Coring
- Industrial/Commercial
- Hydrofracturing
- Geothermal

FORT MODULAR INC.



- INFO@FORTMODULAR.COM
- 604-381-3678
- 3294 262 STREET LANGLEY, BC V4W 2X2

ABOUT FORT MODULAR INC.

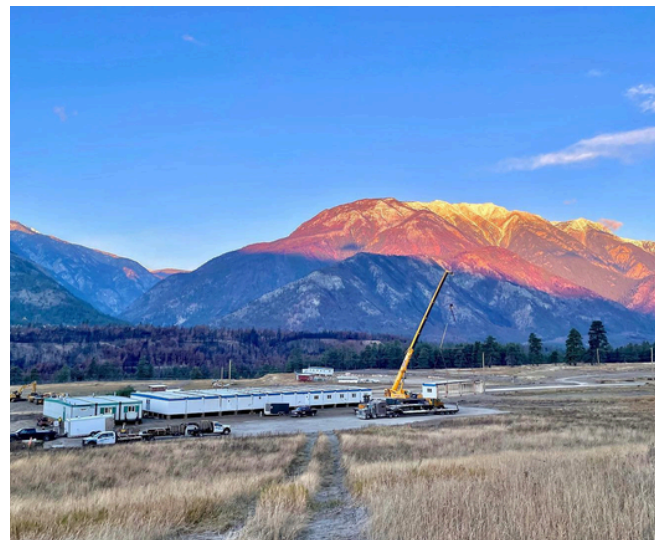
FORT MODULAR Inc. is an independent supplier of new, used, and renovated commercial/industrial modular buildings, mobile offices, portable classrooms, steel offices and steel containers for rent or purchase.

With the largest manufacturing capacity in Southern British Columbia (with operations in Metro Vancouver and the Okanagan), Fort Modular Inc. has become BC's largest, locally and privately-owned supplier of new, used, and renovated site office trailers, affordable housing, steel office containers, camp accommodations, portable classrooms, and other temporary or permanent modular buildings (for sale or rent).

With more than 25 years of experience and an extensive track record of satisfied customers, Fort Modular can take care of all your project needs: design, build, renovation, site preparation, transportation, and installation of new, used, or renovated mobile buildings or trailers.

K'EN T'EM PARTNERSHIP

K'en T'em and Fort Modular shared revenue in 2022.



ABOVE: FORT MODULAR WORK AT LYTTON FIRST NATIONS

SERVICES

- Classrooms
- Designer Offices
- Complexes
- Mobile Offices
- Field Offices
- Steel Offices
- Steel Containers
- Washrooms
- Alberta Part 10
- Custom Design

HARRISON INDUSTRIAL CONTRACTING



- HARRISON@HARRISONINDUSTRIAL.CA
- 250-828-1996
- 475 CHILCOTIN ROAD KAMLOOPS BC, V2H 1G4

ABOUT HARRISON INDUSTRIAL CONTRACTING

From energy consumption and electrical design analysis to a clean, efficient install of the right solution, Harrison Industrial Contractors, Ltd., provides complete industrial electrical support for your growing business. They have years of experience servicing, upgrading, and maintaining industrial electrical systems. Their on-hand inventory means that whether they're troubleshooting or repairing a failing system, improving lighting or an electrical service, or building new, they've done it before and have what the job needs.

With 28 years in the business and 15 years onsite at Highland Valley Copper, Harrison Industrial Contractors, Ltd. provides complete electrical solutions for new and existing mining installations.



They have the experience and resources to handle major shutdowns under tight timelines with confidence and efficiency. From problem analysis, design, and project management through install and maintenance, Harrison can keep the mine lit and running under the most demanding conditions.

K'EN T'EM PARTNERSHIP

K'en T'em and Harrison Electrical have a revenue sharing agreement.

SERVICES

- Mining
- Industrial/Commerical
- Institutional
- Municipal/Maintenance

INTEGRAL ECOLOGY GROUP



- INTEGRAL ECOLOGY GROUP
- 778-676-0327
- 4290 WHEATLEY RD DUNCAN, BC V9L 6H1

ABOUT INTEGRAL ECOLOGY GROUP (IEG)

IEG specializes in applied environmental and cultural research, offering a breadth of expertise for interdisciplinary project work. They work closely with communities and other partners to conduct community-led health and wellness studies. Collaborating with communities, IEG designs research approaches and deliverables that address their concerns and questions about the health and wellbeing of their members. Their methods include interviews, focus groups, surveys, field visits, traditional food sampling and analysis, documenting Indigenous knowledge, and utilizing mobile app survey technology. IEG is a small employee-owned company comprised of 20 professionals who are carefully selected to provide consulting expertise in applied ecological and cultural research.

IEG is committed to working at the interface between humans and their environments, applying innovative approaches to ecosystem and cultural assessment, repair and support, and land-use management. Their expertise lies in the disciplines of ecology, ethnoecology, reclamation science, and cumulative-effects studies.



ABOVE: BERRY PICKING BY A COMMUNITY MEMBER
DONE FOR AN HVC DUST STUDY

K'EN T'EM PARTNERSHIP

K'en T'em and Integral Ecology hold a revenue sharing agreement. Integral also support environmental programs in conjunction with K'en T'em.

SERVICES

- Cumulative effects and Land Use Planning
- Mine reclamation and Closure Planning
- Ecosystem Assessment and Biomonitoring
- Ethnoecology and Ethnobotany
- Stakeholder Facilitation and community Engagement
- Indigenous Rights Assessment
- Indigenous Knowledge and Social Science Research
- Indigenous Health Research
- Remote Sensing and GIS Analysis

INTERIOR IRON



- INTIRON@SHAW.CA
- 250 374 0039
- 908 CAMOSUN CRESCENT KAMLOOPS, BC V2C 6G2

ABOUT INTERIOR IRON

Interior Iron is a heavy industrial company specializing in heavy rigging, conveyor and mechanical installation, and structural steel erection. Founded by Robert Lucas in 1999, Rob brings 33 years of ironwork experience, including expertise in unique and complex projects. All employees are trained and certified ironworkers with specialized training in fall prevention, rigging, and other trade-specific areas. Interior Iron is capable of coordinating, managing, and supervising projects of any size in both industrial and commercial settings. With 33 years of experience, they excel in troubleshooting and field engineering designs to overcome complex site problems while emphasizing safety, timely completion, and staying within budget.

Interior Iron prioritizes health and safety, ensuring that everyone involved with the company remains injury-free. Their processes, from planning to execution, emphasize workplace safety and adhere to industry standards. Interior Iron takes pride in delivering the highest quality workmanship to their clients while maintaining a positive safety attitude. They strive for zero incidents on every project, making it a shared responsibility among employees, subcontractors, vendors, and visitors.



INTERIOR IRON ACCOLADES



K'EN T'EM PARTNERSHIP

K'en T'em and Interior Iron have a revenue sharing agreement. Interior Iron also offers employment and Training oportutnies to CNA members, along with Subcontracting oportunities for K'en T'em and and band owned businesses.

SERVICES

- Structural Steel Erection
- Mechanial Installation
- Heavy Rigging
- Conveyors
- Shutdowns
- Miscellaneous Jobs



ABOVE: HVC STOCK PILE COVER AND CLADDING
- GEODESIC DOMES

LAKEWOOD ELECTRIC



- INFO@LAKEWOOD ELECTRIC.CA
- 250-563-4100
- 2007 OGILVIE ST S PRINCE GEORGE, BC

ABOUT LAKEWOOD ELECTRIC

Lakewood Electric Ltd. was formed in 1972 and is owned by four Senior Members with a collective experience of over 110 years in the electrical industry. In 41 years Lakewood Electric Ltd. has expanded its resources and expertise to encompass the full scope of electrical power and control installations, instrumentation, commissioning, as well as project design and turn-key installations in specific industries.

Lakewood Electric Ltd. maintains project quality control by providing fully trained and experienced supervisors and foremen overseeing a skilled work force. This supervision ensures that only the best of accepted trade practices and specified materials will be utilized.

K'EN T'EM PARTNERSHIP

K'en T'em and Lakewood Electric have a revenue sharing agreement. Lakewood Electric also offers employment and Training opportunities to CNA members, along with Subcontracting opportunities for K'en T'em and and band owned businesses.



SERVICES

- Industrial Installations
- Instrumentation
- Maintenance and Service
- Commercial Installations
- Communications & Data Cabling Systems

NEWPORT STRUCTURES LTD.

NEWPORT
STRUCTURES LTD.

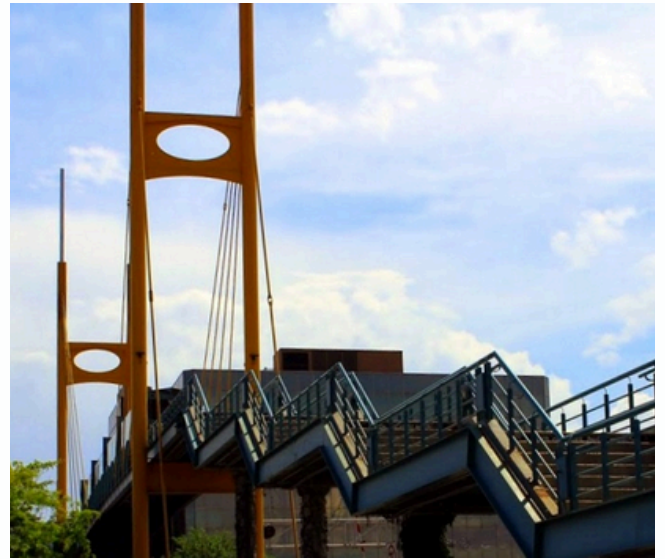
- 250-280-8999
- 2071 TRANS-CANADA HWY
KAMLOOPS BC, V2C 4A5

ABOUT NEWPORT STRUCTURE INC.

Newport Structures Ltd. is a heavy industrial contractor specializing in concrete, bridges, multi-plates, and steel fabrication. Located in the Interior of British Columbia Newport has served regions throughout BC and Alberta for over 25 years. We have worked on projects for a wide range of industries from oil and gas, hydro, pulp, and many more.

Here at Newport our objective is to serve every project with skilled workers, professional site supervisors, and up-front management. From bid to build every step is tracked to ensure quality workmanship and finishes that meet or exceed all design specifications.

Safety is always an important factor on any worksite, no matter the industry. Newport Structures strives to have every project completed with no accidents and no injuries. To ensure our safety program is industry-leading, Newport is a COR and ISNetworld certified company. With these partnerships we are able to serve every project with trained personnel who can quickly identify potential hazards, make plans to correct or mitigate these hazards, and effectively implement corrective action.



K'EN T'EM PARTNERSHIP

K'en T'em and Newport Structures Ltd. have a revenue sharing agreement. Newport Structures Ltd. also offers employment and Training oportutnies to CNA members, along with Subcontracting opportunities for K'en T'em and and band owned businesses.

SERVICES

- Bridges
- Concrete
- Multi-Plates
- Steel Fabrication



RKM SERVICES LTD.



- 778-469-4677
- 2 – 285 PEERLESS WAY KAMLOOPS, BRITISH COLUMBIA • V2C 6X2

ABOUT RKM SERVICES LTD.

On June 18th 2008, RKM Services Ltd. was incorporated and commenced operations in British Columbia and Alberta. The management team of RKM Services Ltd. continues to develop long standing working relationships with their extensive client base. These close relationships include several of the original equipment manufacturers which allow us to provide integrated engineering, equipment supply, construction installation and maintenance packages at a competitive price. This has helped to make RKM Services the company that it is today.

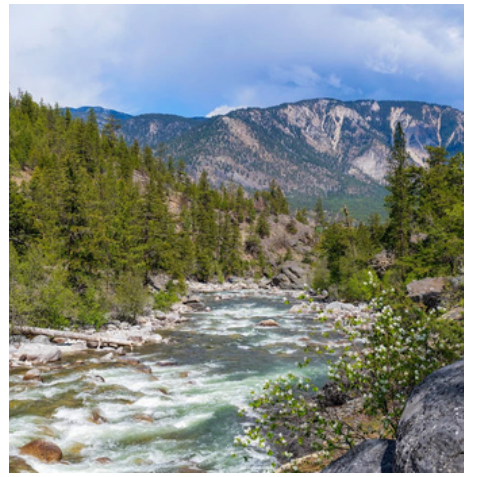
RKM Services Ltd. continues to develop itself into a diversified Maintenance Service provider and a General Project Construction Company.

In 2013, RKM Services Ltd. reached our goal of achieving the BCCSA Injury Management audit. Through our commitment we were able to reduce injuries and decrease overall claim costs. RKM Services continues to strive for excellent safety standards.



SERVICES

- Cement Industry
- Commercial Steel Installation
- Fertilizer Plants
- Highways/Infrastructure-Bridges
- Lime Industry
- Mining Industry
- Pellet Plants
- Process Facilities
- Pulp and Paper Industry
- Waste Management Facilities
- Wood Handling Systems
- Dryer Installation
- Equipment Salvage and Re-Installation
- Piping System Installation
- Pressure Vessel and Storage Tank Installation
- Kiln Installation
- Special Technical Services Work
- Structural Steel Installation
- Welding Services Maintenance Activities





K'EN T'EM LIMITED PARTNERSHIP

2025 Granite Avenue
Merritt, BC V1K 1B8
250-378-1864
www.kentem.ca

